

MAKE IT HAPPEN!



AVAILABLE BUILDING

WHY LOCATE IN CPA LOGISTICS CENTER ADN?

- 24 hours park security with controlled access.
- Located in the northern industrial corridor.
- Great for distribution and light manufacturing.
- State-of-the-art utilities and landscaping.
- Abundant workforce nearby.
- Private and public transportation.
- Excellent communication infrastructure.

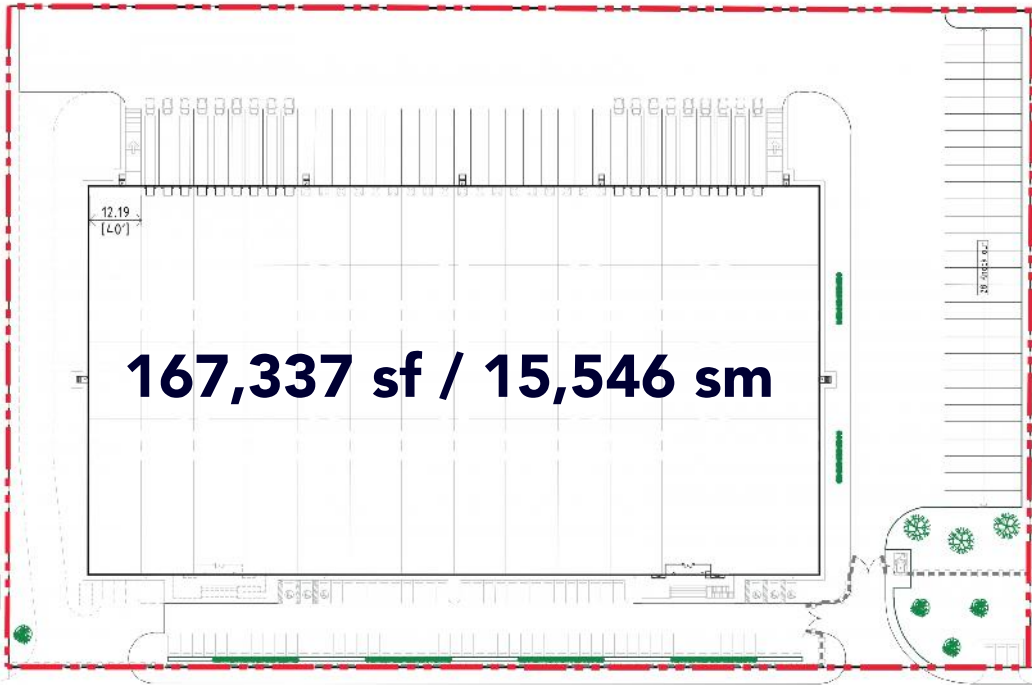
01 800 CPA LIKE 

www.cpamericas.com

 /cpamericas

 @cpamericas

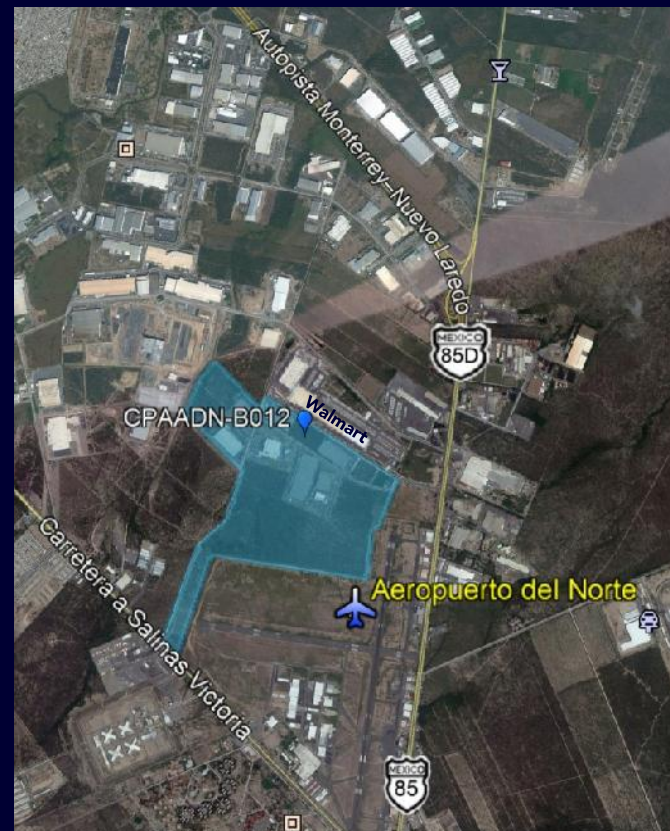
CPA LOGISTICS CENTER ADN CPAADN-B012



AVAILABLE FOR LEASE

PROPERTY HIGHLIGHTS

- Land area: 396,213 sf
- Building area: 167,337 sf
- Office area, FPS, Ventilation: Completed to tenant's requirement
- Construction: Pre-cast concrete panels
- Min. clear height: 32.81 feet
- Floor slab: 6-inch, reinforced, ashford protection
- Dock equipment: 18 loading doors and 2 ramps
- Interior lighting: 7% of natural light
- Parking lot: 92 car spaces
- Security: Guardhouse and perimeter fence



CONTACT US:

Anaid Almaguer

nalmaguer@cpamericas.com

81-10-80-56-88

Alejandra Enríquez

menriquez@cpamericas.com

81-82-59-08-32

BECAUSE LOCATION MATTERS